

# HAWKVIEW SYSTEM

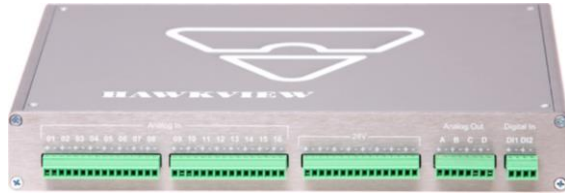
## 16 ANALOG INPUTS

16 isolated differential analog inputs are available in  $\pm 20V$  or  $\pm 10V$  range.

Their design allow for simultaneous high-frequency data collection. With its non-intrusive design, the HawkView System can also provide 24V power to supply 16 local 2-wire transmitters.

## 4 ANALOG OUTPUTS

4 isolated, 0 to 21mA analog outputs allow the HawkView System to simulate any form or signal shape and can also be used as a DCS emulator.

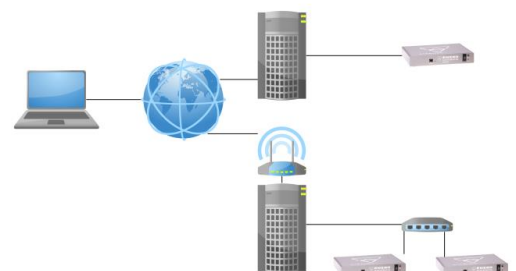
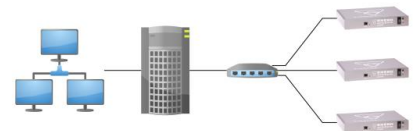


The **HawkView System** from Enero Solutions is an industrial Ethernet-based data acquisition system providing input-to-output isolation. This unique tool offers the industry a centralized system to access and store valuable high-speed data enabling effective management of the process under study. Moreover, using an Ethernet communication protocol allows distant data acquisition, simultaneous multi-module data collection and eliminates the need for expensive and fragile PCMCIA cards with cable connectors.

Outstanding resolution on the acquired signal is achieved through a 24 bits analog-digital conversion.

Individual sampling rates from 1 Hz to a fast 1 kHz are available which allow for the analysis of rapid process variations.

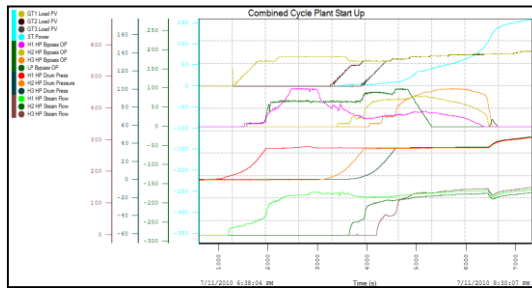
Direct PC connection, local network connection or connection via the Internet are possible through an Ethernet communication link.



# HAWKVIEW SYSTEM

## COLLECTOR TOOLBOX

The Collector Toolbox is the interface to the Hawkview System. Once collected, data can be displayed with a powerful, intuitive and easy to use trending tool.



Collector offers a powerful visualisation tool

## PROCESS OPTIMIZATION TOOLBOX

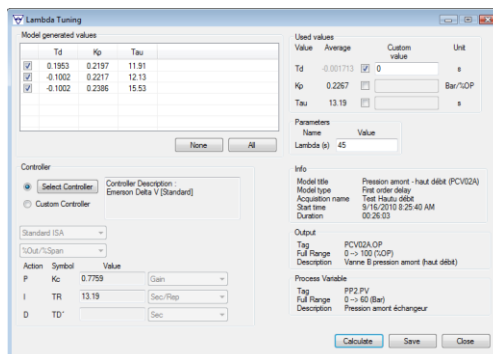
Data acquired with the Collector software can be analysed using different mathematical functions:

- Statistical analysis.
- Model Identification.
- Lambda Tuning.

## VISSIM\* ADD-ON

Process variables simulated using the VisSim\* software can be available in an analog format using the HawkView System.

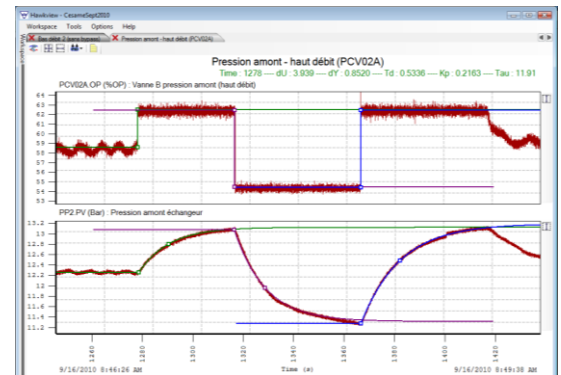
The **Process Optimization Toolbox** performs necessary analysis for industrial process optimization with data collected through the Collector toolbox: *Process model identification and Tuning* is simplified by an intuitive interface. *Process Analysis and Troubleshooting* can be performed very easily using easy-to-use frequency analysis and statistical functions.



Controller Tuning Interface

The **Collector** toolbox collects process data from one or more Hawkview System through an Ethernet connection. Viewing of real-time or recorded data is facilitated using an easy to use visualisation tool.

The **SigGen** tool is included with the toolbox and allows analog signals to be generated manually or from an Excel datasheet.



Process modeling on a bump test

The Hawkview System and Toolboxes by Enero Solutions are designed to provide the user with high-fidelity data together with a modern trending and process analysis interface.

### For more information contact:

#### Enero Solutions Inc.

370 Guy, Suite 207,  
Montreal, QC

Canada,  
H3J 1S6

Tel.: 514.439.0941

Email: sales@enerosolutions.com

\*VisSim is a Visual Solutions Inc Trademark